

Update on the progress of the Bird in Hand Gold Project

Our review process on recent Community Response documents is now complete

In February, Terramin confirmed it had received 246 (252 including duplicates) public submissions that were presented to the State Government as part of the company's proposal to reopen the historic Bird In Hand gold mine at Woodside.

As you may be aware, resource projects are subject to detailed scrutiny which means a lot of work happens in the background that isn't visible to the public.

Terramin staff and experts have been working through the task of responding to 120 questions sent to us by the SA Government in February. The questions were a distillation of matters raised by the public in response to our community consultation and technical reviews undertaken by the Government.

In all, 246 public submissions were received which is a typical number for this type of project, obviously with some duplication of topics.

Community consultation is a standard process for resource projects and the need to seek well considered and detailed responses to each of the 120 questions is a standard procedure.

A spokesman for the company said: "The questions provide an opportunity for Terramin to provide further clarification on key points, mainly related to water management. The company welcomes the opportunity to provide more information on the high quality BIHGP project."

The submissions ranged from letters of opinion from individuals to professional reviews or commentaries made on behalf of a community group or an industry body. Once these were received from the Department for Energy & Mining (DEM), Terramin's experienced staff began to thoroughly evaluate all submissions using a professional review process.

In specific cases where the queries related to the work of Terramin's professional consultants, Terramin referred the commentaries back to those professionals, several of whom have been involved in the preparation of the mining proposal for the past five years.

"As you would expect, the responses by our consultant reviewers has been professional and respectful, Terramin also adheres to this methodology," said Terramin CEO Richard Taylor.

"It is worth noting that in some instances, comments by community or their consultants showed they may have reviewed older reports or were not aware of updated data in the MLA. This can be explained by the fact that Terramin through its engagement processes, including that with the Woodside Community Consultative Committee, updated various studies during the process and the fact that the MLA covers a large body of work".

The specific responses by Terramin expert consultants, summarised below, were selected from multiple community comments:

Water Studies

Golder Associates has reviewed the work by Russell Martin and Peter Cook, commissioned by Bird in Hand Winery and confirms that the modelling as presented in the MLA is appropriate for the stage of development required to fulfill the Ministerial Declaration. Golder noted that the reports focused on information more appropriate at the PEPR and operations stage. Further, Golder confirmed that the 70% grouting effectiveness was appropriate for the lower boundary and that lowering this threshold was unrealistic given the expert reports on grouting effectiveness from MultiGrout, Golder, and Saydam 2019.

Visual Amenity Studies

The review by Terramin landscape consultants Oxigen concluded the Grieve Gillet Anderson montage commissioned by Bird in Hand Winery was "not an accurate representation of the proposal". The review by Grieve Gillet Andersen (GGA) did not replicate exactly the photo montage views by Oxigen – leading to different representations.

Economic Studies

BDO Econsearch was engaged by Bird in Hand Winery to undertake a peer review of the ERC study – which was completed on the 20th September 2019 (BDO Econsearch, 2019). Issues raised by BDO were not raised by the SA Centre for Economic Studies which reviewed the ERC report in accordance with the Ministerial Determination. ERC is of the view that the matters raised by BDO have no major impact on the modelling outcomes, nor on the conclusions of the ERC report, noting that at the initial report by ECR met and continues to meet the requirements of the Ministerial Determination.

Noise (acoustic) Studies

Comments by SONUS in relation to the noise modeling have been responded to by WSP on behalf of Terramin. WSP concludes that the requirements of the Environment Protection (Noise) Policy 2007 are met, and as such satisfy the general environmental duty under Section 25 of the Environment Protection Act.

Traffic Studies

Tonkin Consulting reviewed the Traffic Impact Assessment Review Letter 'MLM/18-0204' prepared by MFY. Tonkin viewed the MFY comments as inconsistent with the Ministerial Determination for Bird in Hand Gold Mine. Tonkin confirmed the adequacy of the proposal to utilise 19m rigid truck and dog vehicles, which are classified as a General Access Vehicles, legally able to travel on the road network proposed as part of the mining application.

Please be aware that these examples are short summaries only – and the full details can be found online.

Community Information Update

Community Engagement continues...

The company stands by its continued aim of engaging directly with any concerned or potentially impacted individual or business by ongoing discussion on specific conditions and arrangements.

The SA government has identified gold as a key commodity for the State, recognising that South Australia is highly prospective for gold and has 27.5% of Australia's demonstrated gold resource. Terramin developed a South Australian Gold Strategy and announced an aspirational target of one million ounces from regional exploration targets in July 2018.

Richard Taylor, Terramin CEO noted, that South Australia has been built on mining and that...

"Terramin has the skills to realise these opportunities with smart technologies, less impact and to create wealth for the community by working with government regulators to ensure protection of the environment and the community."

The Community Engagement Program so far has included:

At Woodside, Terramin has provided a wide and responsive community engagement program based on government approved guidelines, since 2013 on the Bird In Hand project.

It included community drop-in days at the Woodside Community Hall, and regular meetings of the Woodside Community Consultative Committee (WCCC) that was created to provide representatives of the community and government with access to Terramin's engineering and scientific studies.

At Strathalbyn, a similar program has been running for over 13 years at the company's Angas Zinc Mine and processing facility. This is the Strathalbyn Community Consultative Committee (SCCC) that still meets quarterly to observe and review any activity at the facility, even though it is now in a managed stage of care and maintenance.

We are committed to demonstrate to the people of the Adelaide Hills – a Gold Mine can operate with minimal impact

Last July Terramin Australia Limited submitted a Mining Lease Application (MLA) to the State Government proposing to re-open the Bird in Hand Gold Mine.

The company has proposed a professional project that would bring many benefits to the local community and to SA:

- 140 new jobs (100 in the Woodside Area and 40 at Strathalbyn)
- \$30 million of local expenditure (per annum)
- 420 Indirect jobs
- \$50 million in State Revenue (to benefit all taxpayers)

Key Details

Low profile: Mine infrastructure is designed to be well within the boundaries of our land and hidden from view by extensive tree stands and vegetation at ground level.

Small Footprint: The mine will pioneer surgical extraction of gold through a single keyhole entry. Operations taking place at the Bird in Hand mine will simply be extracting rock underground. Processing will take place at Strathalbyn.

No water impact: Any water removed from the mine will be pumped back into the aquifer after being filtered. The water will be returned as clean, or cleaner, than when it was taken out.

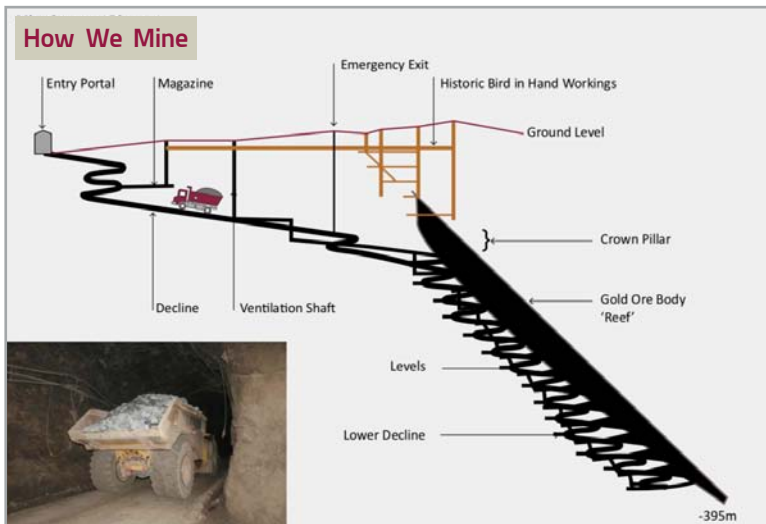
Low noise levels: The mine design and activities on the site have been carefully considered to ensure minimal sound levels.

Fact: We want everyone to know that we expect questions from the community.

Terramin is wholly supportive of the scrutiny this project is receiving and our stated position has always been to ensure the project proceeds with the strictest safeguards in place and delivering on our promise to protect the environment and operate in a manner compatible with the needs of our nearest neighbours and the surrounding community.

Once we have submitted our response to the SA government, they will be in a position to make a decision as to whether to grant a Mining Lease. Once a Mining Lease is granted, the company will begin scaling up its resources as it moves through the PEPR (Program for Environmental Protection and Rehabilitation) approvals process towards mining.

The PEPR also includes another period of public consultation. It is during this process that specific management strategies are agreed upon to ensure environmental outcomes are met.



The timing of this process was built into our original schedule and we are still on-track.

For more information please visit our website:
www.birdinhandgoldmine.com.au

Jobs with Terramin – we are listening

Terramin wishes to thank the 130+ individual people and businesses who have enquired about employment or business opportunities with Terramin at the proposed Bird In Hand Gold Mine re-opening.

People applying in anticipation of the mine being approved will be added to our mailing list and will be the first to be advised if and when recruitment commences.

We will continue to accept emails from both businesses and individuals and you can email us from our website.

For those who have already made contact with us, we have saved your details on file as you expressed interest in our project for either commercial opportunities or as a potential employee. Thank you for your interest and support.

Community involvement business programs will happen

We want to remind people that Terramin's policy continues to be "BUY Local & EMPLOY Local" wherever possible for our projects.

That policy began successfully at Strathalbyn during our seven years of operation underground mining operations there. As a feature of that community involvement, Terramin management established a 'Buy Local' scheme with local town business suppliers.

This scheme rewarded workers' for their safety achievements by providing monthly 'Safety Vouchers' for our 140 employees, who were then able to use these credits exclusively at local businesses.

It was a very popular and successful local activity that the company will replicate at both Woodside and region and again at Strathalbyn

Community Sports Support

Local sports and community organisations are receiving sponsorship support during the five years Terramin has been working on the project development at Woodside.

Already there are several groups that have received sponsorship grants including support for Woodside Warriors Soccer Club towards their solar panels project and also for the Lobethal Tigers Football Club.

We hope to begin our community support once more at Strathalbyn when work continues at the Angas facility.

Our 'Open Day' activity may be 'virtual' but will provide updates on the progress of the BIH Gold Project

Due to the COVID-19 pandemic, we have had to accept that a traditional meeting will not be possible to allow the public to review or comment further on the existing process of engagement.

To ensure compliance with social distancing rules and numbers of people attending non-essential gatherings the open day can only be held by appointment. This will be subject to Government and medical advice.

Terramin invites any stakeholders interested in the Bird In Hand Gold Project to attend a 'virtual' open day. This will allow interested community members a chance to speak directly with a staff professional or one of our expert consultants, via phone links and video links.

It is an important part of the government's engagement process that we continue to listen to any comments to this current stage.

We will also have an event for Strathalbyn community members.

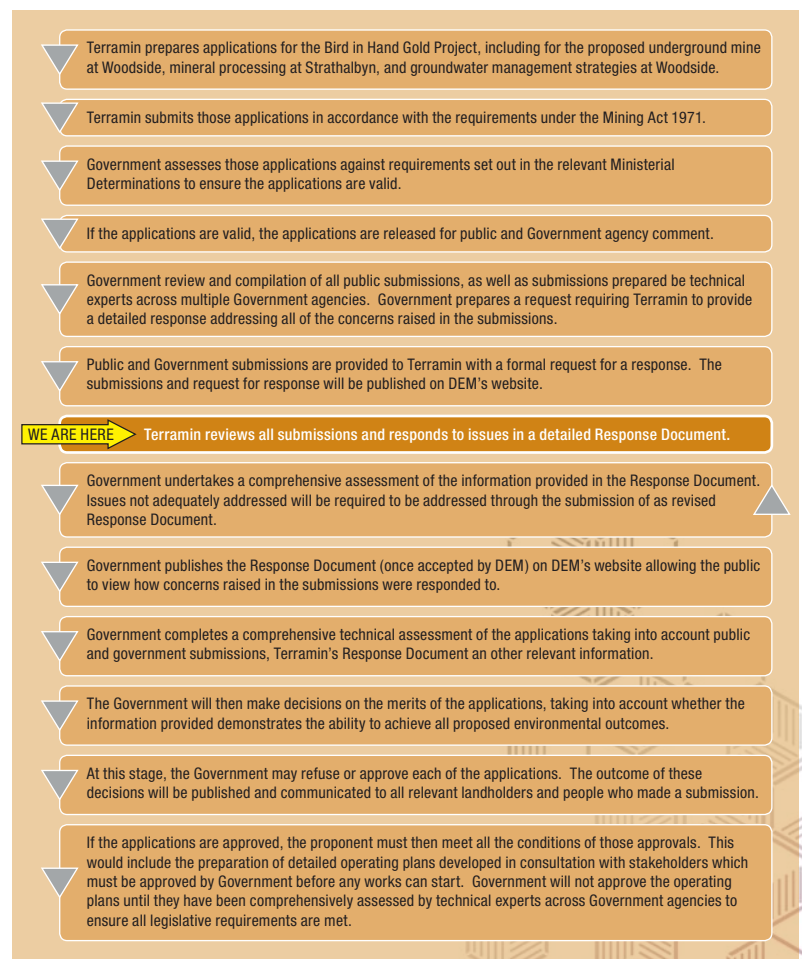
If you are interested in attending please contact

info@terramin.com.au OR

If you are not comfortable to attend in person, please send any questions to info@terramin.com.au or reach out to us via our social media.

www.facebook.com/birdinhandgoldmine/ or www.birdinhandgoldmine.com.au

In this way, we can arrange for your preferred method of contact.



Community Information Update

Rare Hills Orchid will live again despite bushfire damage

From December's bushfire devastation around Woodside there may be a microscopic miracle – the survival of the endangered Adelaide Hills 'Caladenia rigida' (Stiff White Spider) orchid.

Sadly, the bushfire seriously damaged an adjoining property which had original native scrubland where Environment Superintendent Matt Daniel and a group of dedicated enviro volunteers collected thousands of the orchid seeds in recent years.



Adelaide Advertiser - 9 May 2019

Matt believes the fire was so intense that remaining seeds in the soil might be damaged beyond survival, but all is not lost thanks to some SA specialists in seed propagation.

In 2014 a near neighbour identified the rare Spider Orchid and a team of experts and volunteers moved in quickly to collect the microscopic seed to conserve this endangered species, a rare one that is geographically connected to just the Mount Lofty Ranges.

The next step was a project-based sponsorship with the South Australian Seed Conservation Centre to ensure that many thousands of microscopic sized seeds were stored safely in the freezer units of this specialist facility in the Adelaide Botanic Garden.

The endangered Caladenia rigida, commonly known as the Stiff White Spider Orchid, once extended across the breadth of the Adelaide Hills but the effect of increased land clearing, overgrazing, pests, bushfires and climatic changes, has put it in decline.

Work is continuing on propagating the endangered Spider Orchard seeds and there is a program planned to transplant 100 plants back to Woodside in coming years.

Seed Conservation Technical Officer, Dan Duval, known as SA's leading "seed detective" said: "Endangered plants like the orchid species are at risk simply because they are so highly adapted to certain areas, like the Mt Lofty Ranges, and so they've become quite rare mainly due to restricted habitat".

"It's important to collect and conserve our most threatened species while the opportunity still exists".

Hopefully, with science and luck on our side, the regeneration of this rare orchid will bring new life back to the Adelaide Hills.

We appreciate the efforts of local volunteer fire units

We are thankful for the efforts of volunteer farm fire units from the neighbouring area including the Polo Club and Bird In Hand Winery, who supported our determined staff in their efforts to save the house and sheds on Goldwyn Farm. A local family is now living in the house until they can recover and rebuild on their property.

Because our property had gravity feed water we were able to share supplies with several local units, in spite of the power blackout.

Fire damaged thousands of shrubs and trees established on the farming property as part of the environmental greening prior to any mine development, but the great majority survived.

As the photo shows, the fire came within metres of the farmhouse, previously used as an office by staff during the site studies and now returned to community duty as a family home.

Special mention should be made for the community support offered to affected families by Dan Cregan MP and Staff who worked tirelessly with local volunteer coordinators to extend the work of BlazeAid groups, providing practical support and ways to assist Service Clubs and many local church groups who prepared meals at the BlazeAid camp in Lobethal for volunteers – among many other activities.

As these photos show, the fire came within metres of the farmhouse, previously used as an office by staff during the site studies and now returned to community duty as a temporary home.

Still standing...the heritage registered Chimney and Flue, on a ridge above our Goldwyn Farm property on Pfeiffer Road, once part of the former Lone Hand Gold Mine on the company property.



TERRAMIN AUSTRALIA LIMITED

ABN 67 062 576 328

Unit 7, 202-208 Glen Osmond Road
Fullarton, South Australia 5063

T: (08) 8213 1415

E: bih@terramin.com.au

W: www.terramin.com.au

CONTACTING US

Terramin has an established Grievance Policy and welcomes your feedback. The Community Relations team will respond to questions about the Company and its projects.

COMMUNITY COMMENTS (24 hours)

T: (08) 8536 8010

Community feedback:
www.terramin.com.au/community-feedback/

Environment & Community Superintendent

T: (08) 8213 1415 during business hours

E: info@terramin.com.au

W www.birdinhandgoldmine.com.au

f www.facebook.com/birdinhandgoldmine/

To receive this newsletter electronically,
subscribe via our website